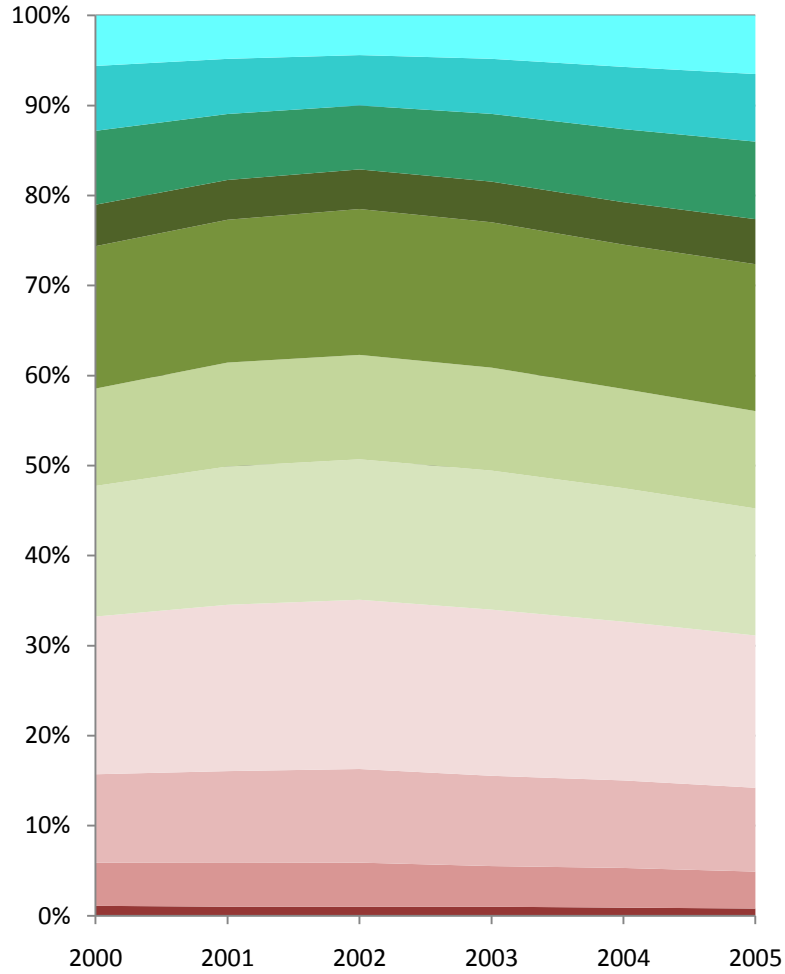


Share of Household Tax Burden by Income Category (2000-2005)

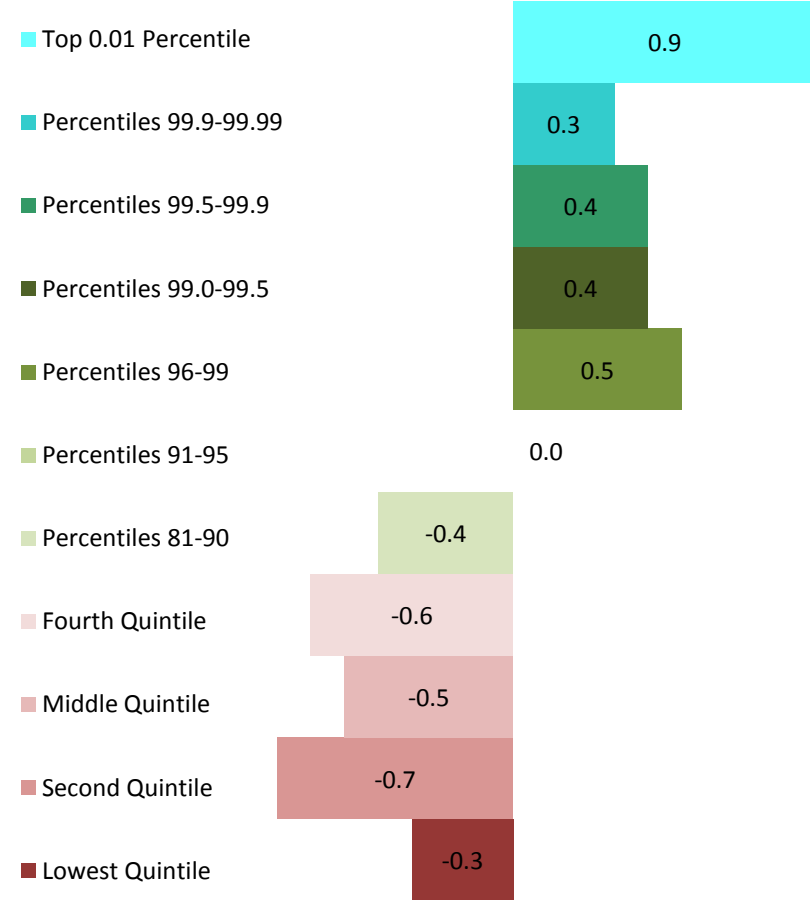
Year	Lowest Quintile	Second Quintile	Middle Quintile	Fourth Quintile	Percentiles 81-90	Percentiles 91-95	Percentiles 96-99	Percentiles 99.0-99.5	Percentiles 99.5-99.9	Percentiles 99.9-99.99	Top 0.01 Percentile
2000	1.1	4.8	9.8	17.5	14.5	10.8	15.8	4.6	8.2	7.2	5.6
2001	1.0	4.9	10.1	18.4	15.3	11.5	15.8	4.4	7.3	6.1	4.8
2002	1.0	4.9	10.4	18.8	15.6	11.6	16.2	4.4	7.1	5.6	4.4
2003	1.0	4.5	10.0	18.4	15.4	11.4	16.1	4.5	7.5	6.1	4.8
2004	0.9	4.4	9.7	17.6	14.8	11	16	4.7	8.1	6.9	5.7
2005	0.8	4.1	9.3	16.9	14.1	10.8	16.3	5	8.6	7.5	6.5
Change	-0.3	-0.7	-0.5	-0.6	-0.4	0.0	0.5	0.4	0.4	0.3	0.9

Source: http://www.cbo.gov/ftpdocs/98xx/doc9884/12-23-EffectiveTaxRates_Letter.pdf

Share of Household Tax Burden by Income Category



Change



Average Household Income by Income Category (2000-2005)

Year	Lowest Quintile	Second Quintile	Middle Quintile	Fourth Quintile	Percentiles 81-90	Percentiles 91-95	Percentiles 96-99	Percentiles 99.0-99.5	Percentiles 99.5-99.9	Percentiles 99.9-99.99	Top 0.01 Percentile
2000	16,600	37,700	57,000	84,500	117,600	157,200	257,300	547,800	1,139,800	4,522,300	34,440,100
2001	16,400	38,000	57,700	83,200	115,400	152,900	240,400	484,800	940,900	3,356,400	22,859,200
2002	15,900	36,800	56,400	81,400	113,400	149,700	231,200	458,000	868,600	2,860,400	18,850,700
2003	15,700	36,500	56,100	82,000	115,000	151,900	237,500	470,700	898,100	3,130,100	23,202,200
2004	15,800	37,200	58,000	84,500	118,700	157,200	250,400	517,300	1,036,600	3,872,200	29,743,900
2005	15,900	37,400	58,500	85,200	120,600	161,800	269,800	588,100	1,207,200	4,699,500	35,473,200

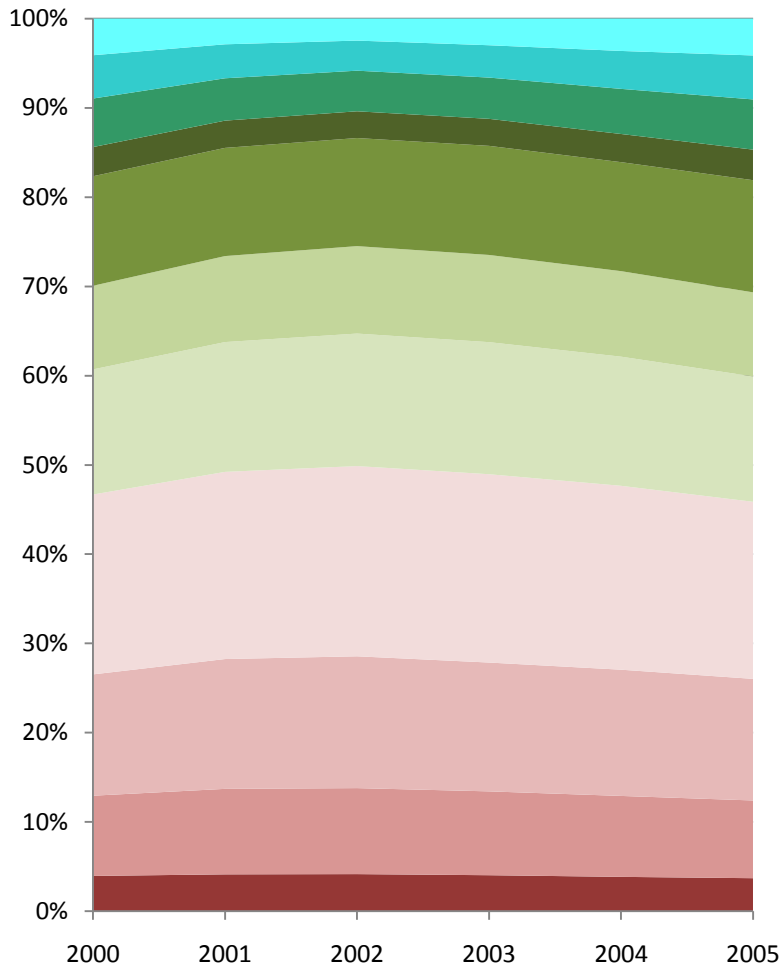
Source: http://www.cbo.gov/ftpdocs/98xx/doc9884/12-23-EffectiveTaxRates_Letter.pdf

Share of Household Income by Income Category (2000-2005)

2000	3.96%	8.99%	13.59%	20.15%	14.02%	9.37%	12.27%	3.27%	5.44%	4.85%	4.11%
2001	4.13%	9.58%	14.54%	20.97%	14.54%	9.63%	12.12%	3.05%	4.74%	3.81%	2.88%
2002	4.16%	9.63%	14.77%	21.31%	14.84%	9.80%	12.11%	3.00%	4.55%	3.37%	2.47%
2003	4.04%	9.39%	14.43%	21.10%	14.79%	9.77%	12.22%	3.03%	4.62%	3.62%	2.98%
2004	3.85%	9.07%	14.14%	20.60%	14.47%	9.58%	12.21%	3.15%	5.05%	4.25%	3.63%
2005	3.70%	8.71%	13.62%	19.84%	14.04%	9.42%	12.57%	3.42%	5.62%	4.92%	4.13%
Change	-0.26%	-0.28%	0.03%	-0.31%	0.02%	0.05%	0.30%	0.16%	0.19%	0.07%	0.02%

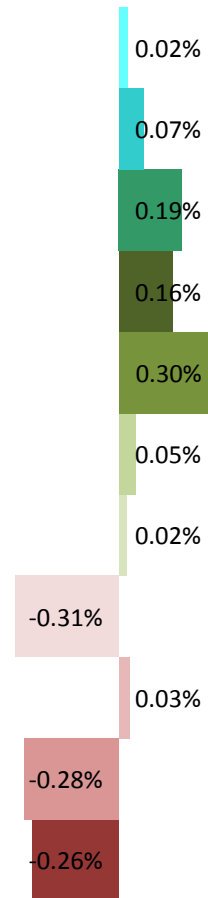
Source: Calculated from average household income by income category

Share of Household Income by Income Category



- Top 0.01 Percentile
- Percentiles 99.9-99.99
- Percentiles 99.5-99.9
- Percentiles 99.0-99.5
- Percentiles 96-99
- Percentiles 91-95
- Percentiles 81-90
- Fourth Quintile
- Middle Quintile
- Second Quintile
- Lowest Quintile

Change



Adjusted Share of Household Tax Burden by Income Category, Adjusted for Share of Household Income, proportional to 2000 (2000-2005)

Year	Lowest Quintile	Second Quintile	Middle Quintile	Fourth Quintile	Percentiles 81-90	Percentiles 91-95	Percentiles 96-99	Percentiles 99.0-99.5	Percentiles 99.5-99.9	Percentiles 99.9-99.99	Top 0.01 Percentile
2000	1.1	4.8	9.8	17.5	14.5	10.8	15.8	4.6	8.2	7.2	5.6
2001	1.0	4.6	9.4	17.7	14.7	11.2	16.0	4.7	8.4	7.8	6.8
2002	1.0	4.6	9.6	17.8	14.7	11.1	16.4	4.8	8.5	8.1	7.3
2003	1.0	4.3	9.4	17.6	14.6	10.9	16.2	4.9	8.8	8.2	6.6
2004	0.9	4.4	9.3	17.2	14.3	10.8	16.1	4.9	8.7	7.9	6.5
2005	0.9	4.2	9.3	17.2	14.1	10.7	15.9	4.8	8.3	7.4	6.5

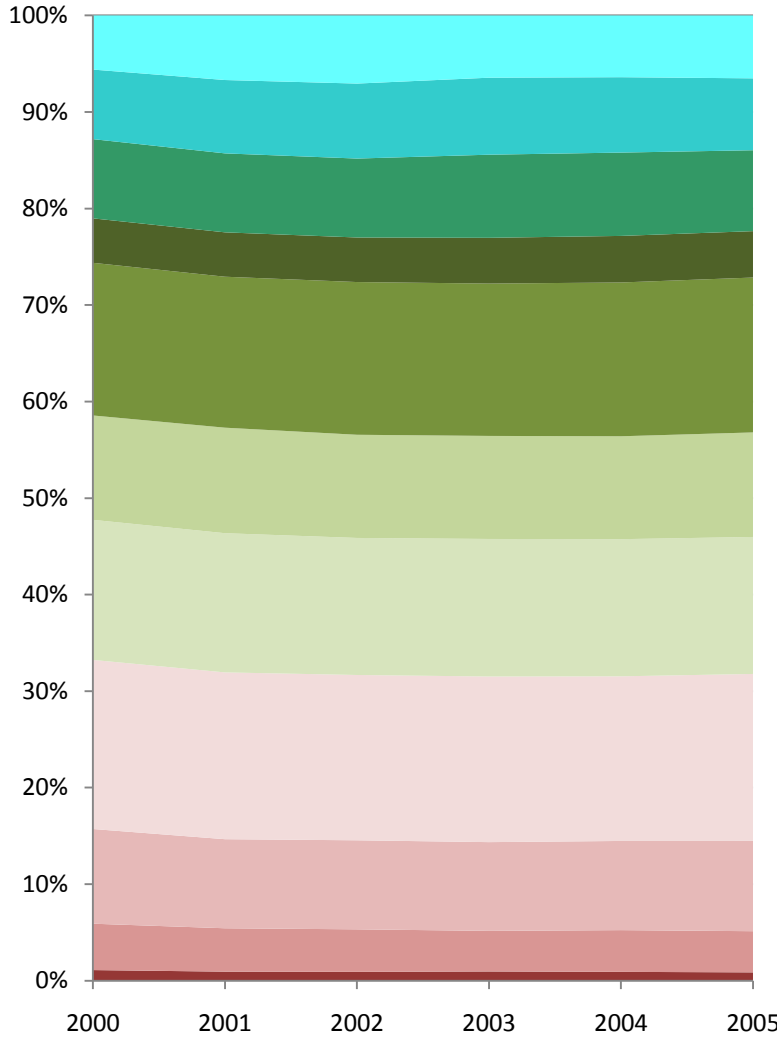
Source: Calculated based on share of household tax burden and share of household income
 Adjusted tax burden = share of tax burden / (share of income in current year * share of income in 2000)

Adjusted Share of Household Tax Burden by Income Category, Adjusted for Share of Household Income, proportional to current year (2000-2005)

2000	1.1	4.8	9.8	17.5	14.5	10.8	15.8	4.6	8.2	7.2	5.6
2001	0.9	4.5	9.2	17.3	14.4	10.9	15.6	4.6	8.2	7.6	6.7
2002	0.9	4.4	9.2	17.1	14.2	10.7	15.8	4.6	8.2	7.8	7.1
2003	1.0	4.2	9.2	17.2	14.3	10.7	15.8	4.7	8.6	8.0	6.4
2004	0.9	4.3	9.2	17.1	14.2	10.7	15.9	4.8	8.6	7.8	6.4
2005	0.9	4.3	9.4	17.3	14.2	10.8	16.0	4.8	8.4	7.4	6.5
Change	-0.2	-0.5	-0.5	-0.2	-0.3	0.0	0.2	0.2	0.2	0.2	0.9

Source: Calculated based on share of household tax burden and share of household income
 Adjusted tax burden = adjusted tax burden proportional to 2000 / sum of adjusted tax burdens for all income categories

Adjusted Share of Household Tax Burden by Income Category



Change

