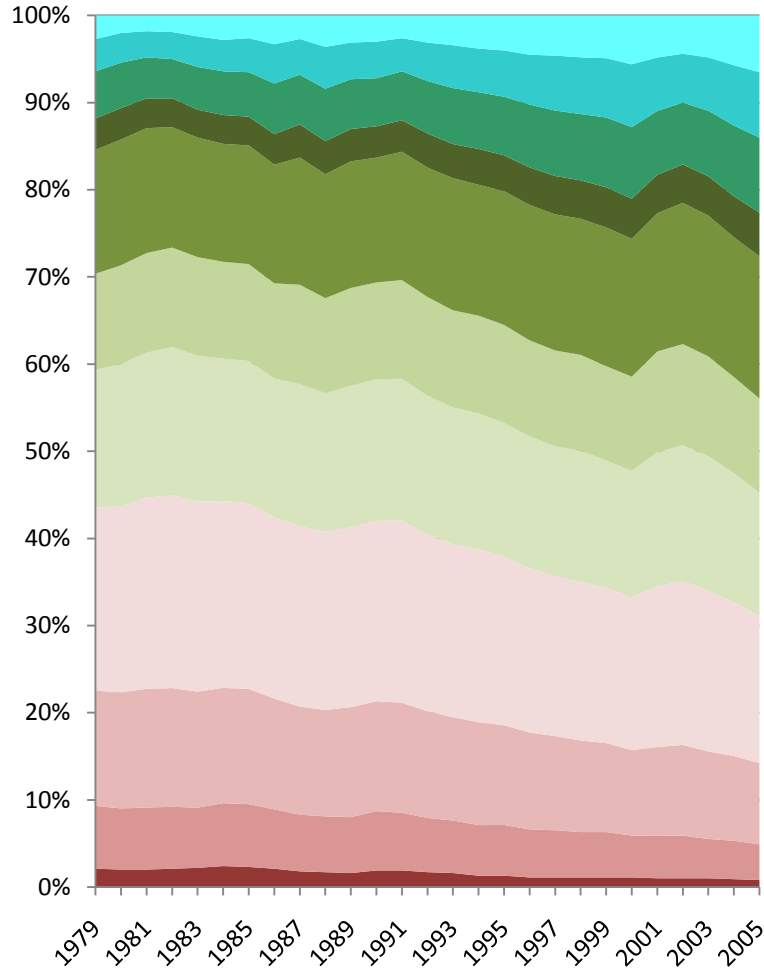


Share of Household Tax Burden by Income Category (1979-2005)

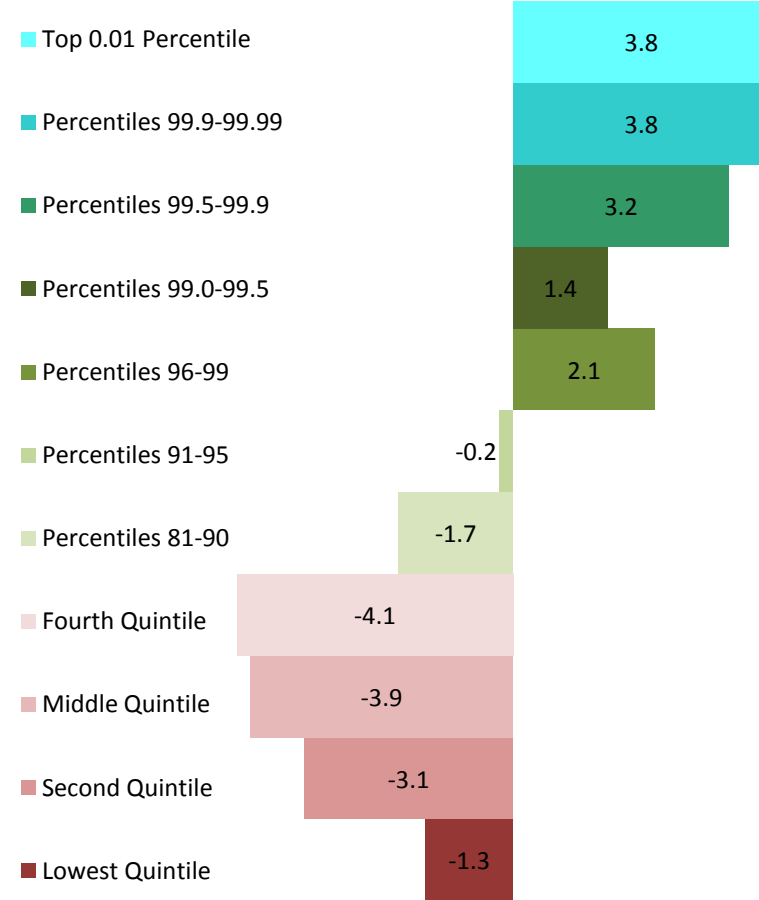
Year	Lowest Quintile	Second Quintile	Middle Quintile	Fourth Quintile	Percentiles 81-90	Percentiles 91-95	Percentiles 96-99	Percentiles 99.0-99.5	Percentiles 99.5-99.9	Percentiles 99.9-99.99	Top 0.01 Percentile
1979	2.1	7.2	13.2	21.0	15.8	11	14.2	3.6	5.4	3.7	2.7
1980	2.0	7.0	13.3	21.3	16.3	11.3	14.4	3.6	5.2	3.4	2
1981	2.0	7.1	13.6	21.9	16.6	11.4	14.3	3.4	4.7	3	1.8
1982	2.1	7.1	13.6	22.1	17	11.4	13.8	3.3	4.5	3.1	1.9
1983	2.2	6.9	13.3	21.8	16.7	11.3	13.7	3.2	4.9	3.5	2.4
1984	2.4	7.2	13.2	21.4	16.3	11.1	13.5	3.3	5	3.6	2.8
1985	2.3	7.2	13.2	21.3	16.3	11.1	13.6	3.3	5.1	3.9	2.6
1986	2.1	6.8	12.7	20.8	15.9	10.9	13.6	3.5	5.8	4.5	3.3
1987	1.8	6.5	12.4	20.7	16.3	11.4	14.6	3.8	5.7	4.1	2.7
1988	1.7	6.4	12.2	20.4	15.9	10.9	14.2	3.8	6	4.8	3.6
1989	1.6	6.4	12.6	20.6	16.2	11.2	14.5	3.7	5.7	4.2	3.1
1990	1.9	6.8	12.6	20.7	16.2	11.1	14.3	3.6	5.5	4.2	3
1991	1.9	6.6	12.6	20.9	16.2	11.3	14.7	3.6	5.6	3.8	2.6
1992	1.7	6.2	12.2	20.2	15.9	11.3	14.8	3.9	6	4.4	3.1
1993	1.6	6.0	11.8	19.8	15.6	11.1	15.1	3.9	6.4	4.9	3.4
1994	1.3	5.8	11.8	19.8	15.6	11.2	15	4.1	6.5	5	3.8
1995	1.3	5.8	11.4	19.3	15.3	11.2	15.3	4.1	6.7	5.3	4
1996	1.1	5.5	11.1	18.8	15.1	11	15.5	4.3	7.2	5.7	4.5
1997	1.1	5.4	10.8	18.3	14.9	11	15.6	4.4	7.5	6.3	4.6
1998	1.1	5.2	10.5	18.2	15	11	15.6	4.4	7.6	6.5	4.8
1999	1.1	5.2	10.2	17.8	14.6	10.8	15.9	4.6	8	6.8	4.9
2000	1.1	4.8	9.8	17.5	14.5	10.8	15.8	4.6	8.2	7.2	5.6
2001	1.0	4.9	10.1	18.4	15.3	11.5	15.8	4.4	7.3	6.1	4.8
2002	1.0	4.9	10.4	18.8	15.6	11.6	16.2	4.4	7.1	5.6	4.4
2003	1.0	4.5	10.0	18.4	15.4	11.4	16.1	4.5	7.5	6.1	4.8
2004	0.9	4.4	9.7	17.6	14.8	11	16	4.7	8.1	6.9	5.7
2005	0.8	4.1	9.3	16.9	14.1	10.8	16.3	5	8.6	7.5	6.5
Change	-1.3	-3.1	-3.9	-4.1	-1.7	-0.2	2.1	1.4	3.2	3.8	3.8

Source: http://www.cbo.gov/ftpdocs/98xx/doc9884/12-23-EffectiveTaxRates_Letter.pdf

Share of Household Tax Burden by Income Category



Change



Average Household Income by Income Category (1979-2005)

Year	Lowest Quintile	Second Quintile	Middle Quintile	Fourth Quintile	Percentiles 81-90	Percentiles 91-95	Percentiles 96-99	Percentiles 99.0-99.5	Percentiles 99.5-99.9	Percentiles 99.9-99.99	Top 0.01 Percentile
1979	15,700	34,000	51,000	69,000	89,700	110,500	162,400	286,500	461,700	1,190,500	7,333,000
1980	15,100	32,600	49,300	66,900	87,200	108,600	156,100	275,900	441,400	1,210,900	6,433,900
1981	14,700	32,300	48,600	67,200	87,000	108,000	153,400	269,700	439,200	1,165,800	6,151,400
1982	14,300	31,500	47,600	66,400	86,300	107,100	153,300	264,400	455,100	1,285,700	7,907,200
1983	13,800	30,300	46,800	66,000	86,900	109,700	157,200	282,600	490,600	1,446,500	8,162,000
1984	14,200	32,100	48,800	68,700	91,000	116,100	168,200	299,800	530,800	1,599,500	9,712,100
1985	14,300	32,200	49,600	69,400	91,900	117,700	171,700	319,600	569,700	1,686,800	10,394,300
1986	14,300	33,000	50,800	72,000	97,100	124,000	188,500	369,500	694,600	2,669,300	16,956,700
1987	14,100	31,800	50,400	72,100	97,700	125,900	186,500	346,500	620,900	1,806,800	9,965,000
1988	14,300	32,400	51,200	72,900	99,800	127,900	193,300	385,400	730,500	2,367,200	15,278,100
1989	14,900	33,000	51,800	73,800	100,800	130,500	197,300	381,700	690,700	2,114,500	12,828,000
1990	15,300	33,800	51,600	72,900	99,000	127,300	190,700	365,700	674,500	2,009,900	12,241,400
1991	15,300	33,300	50,800	72,100	97,500	125,800	186,600	355,600	621,600	1,798,500	10,205,500
1992	15,000	33,100	51,100	72,800	98,700	127,700	194,400	383,300	689,000	2,173,700	13,691,400
1993	15,300	33,300	51,400	73,400	100,100	129,100	193,800	367,100	665,200	2,036,000	12,946,900
1994	15,200	33,600	51,800	74,600	101,300	131,500	198,900	382,100	674,600	2,059,200	12,655,000
1995	16,000	35,200	53,200	75,800	104,400	134,400	209,800	412,800	731,700	2,309,800	13,731,000
1996	15,700	35,000	53,900	77,100	105,900	139,300	216,100	425,400	806,300	2,726,000	17,963,400
1997	16,100	35,800	54,700	78,500	108,200	143,500	229,600	463,800	897,800	3,182,500	22,145,700
1998	16,900	37,400	56,100	81,600	112,200	149,000	241,900	498,100	992,800	3,673,200	25,749,300
1999	17,400	38,400	57,300	83,700	116,000	154,400	251,900	531,300	1,070,900	4,139,500	29,944,400
2000	16,600	37,700	57,000	84,500	117,600	157,200	257,300	547,800	1,139,800	4,522,300	34,440,100
2001	16,400	38,000	57,700	83,200	115,400	152,900	240,400	484,800	940,900	3,356,400	22,859,200
2002	15,900	36,800	56,400	81,400	113,400	149,700	231,200	458,000	868,600	2,860,400	18,850,700
2003	15,700	36,500	56,100	82,000	115,000	151,900	237,500	470,700	898,100	3,130,100	23,202,200
2004	15,800	37,200	58,000	84,500	118,700	157,200	250,400	517,300	1,036,600	3,872,200	29,743,900
2005	15,900	37,400	58,500	85,200	120,600	161,800	269,800	588,100	1,207,200	4,699,500	35,473,200

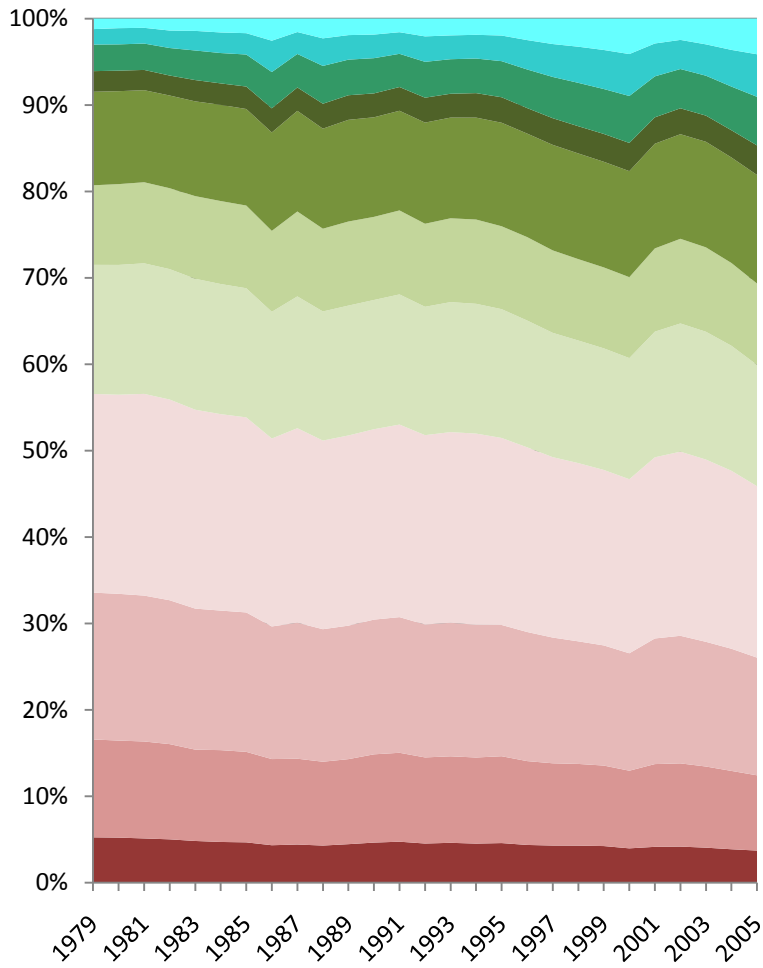
Source: http://www.cbo.gov/ftpdocs/98xx/doc9884/12-23-EffectiveTaxRates_Letter.pdf

Share of Household Income by Income Category (1979-2005)

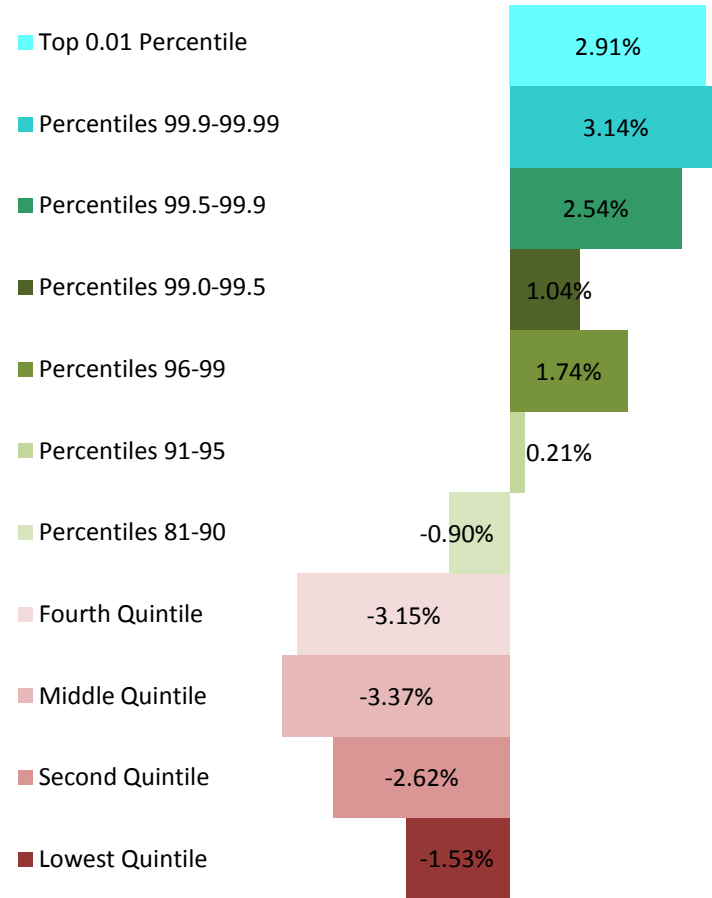
1979	5.23%	11.33%	17.00%	22.99%	14.95%	9.21%	10.82%	2.39%	3.08%	1.79%	1.22%
1980	5.20%	11.23%	16.98%	23.05%	15.02%	9.35%	10.76%	2.38%	3.04%	1.88%	1.11%
1981	5.11%	11.22%	16.89%	23.35%	15.11%	9.38%	10.66%	2.34%	3.05%	1.82%	1.07%
1982	5.00%	11.02%	16.65%	23.23%	15.10%	9.37%	10.73%	2.31%	3.18%	2.02%	1.38%
1983	4.81%	10.57%	16.32%	23.02%	15.16%	9.57%	10.97%	2.46%	3.42%	2.27%	1.42%
1984	4.70%	10.62%	16.15%	22.74%	15.06%	9.61%	11.13%	2.48%	3.51%	2.38%	1.61%
1985	4.65%	10.48%	16.14%	22.58%	14.95%	9.57%	11.17%	2.60%	3.71%	2.47%	1.69%
1986	4.32%	9.97%	15.35%	21.75%	14.67%	9.37%	11.39%	2.79%	4.20%	3.63%	2.56%
1987	4.40%	9.93%	15.74%	22.52%	15.26%	9.83%	11.65%	2.71%	3.88%	2.54%	1.56%
1988	4.28%	9.70%	15.34%	21.83%	14.95%	9.58%	11.58%	2.89%	4.38%	3.19%	2.29%
1989	4.44%	9.84%	15.45%	22.01%	15.03%	9.73%	11.77%	2.85%	4.12%	2.84%	1.91%
1990	4.62%	10.22%	15.60%	22.03%	14.96%	9.62%	11.53%	2.76%	4.08%	2.73%	1.85%
1991	4.73%	10.29%	15.70%	22.28%	15.07%	9.72%	11.53%	2.75%	3.84%	2.50%	1.58%
1992	4.52%	9.97%	15.38%	21.92%	14.86%	9.61%	11.71%	2.89%	4.15%	2.94%	2.06%
1993	4.60%	10.01%	15.45%	22.07%	15.05%	9.70%	11.65%	2.76%	4.00%	2.75%	1.95%
1994	4.51%	9.97%	15.36%	22.13%	15.02%	9.75%	11.80%	2.83%	4.00%	2.75%	1.88%
1995	4.57%	10.05%	15.19%	21.65%	14.91%	9.60%	11.98%	2.95%	4.18%	2.97%	1.96%
1996	4.35%	9.70%	14.94%	21.37%	14.68%	9.65%	11.98%	2.95%	4.47%	3.40%	2.49%
1997	4.28%	9.52%	14.55%	20.88%	14.39%	9.54%	12.21%	3.08%	4.78%	3.81%	2.95%
1998	4.27%	9.46%	14.19%	20.64%	14.19%	9.42%	12.23%	3.15%	5.02%	4.18%	3.26%
1999	4.22%	9.32%	13.91%	20.31%	14.07%	9.37%	12.23%	3.22%	5.20%	4.52%	3.63%
2000	3.96%	8.99%	13.59%	20.15%	14.02%	9.37%	12.27%	3.27%	5.44%	4.85%	4.11%
2001	4.13%	9.58%	14.54%	20.97%	14.54%	9.63%	12.12%	3.05%	4.74%	3.81%	2.88%
2002	4.16%	9.63%	14.77%	21.31%	14.84%	9.80%	12.11%	3.00%	4.55%	3.37%	2.47%
2003	4.04%	9.39%	14.43%	21.10%	14.79%	9.77%	12.22%	3.03%	4.62%	3.62%	2.98%
2004	3.85%	9.07%	14.14%	20.60%	14.47%	9.58%	12.21%	3.15%	5.05%	4.25%	3.63%
2005	3.70%	8.71%	13.62%	19.84%	14.04%	9.42%	12.57%	3.42%	5.62%	4.92%	4.13%
Change	-1.53%	-2.62%	-3.37%	-3.15%	-0.90%	0.21%	1.74%	1.04%	2.54%	3.14%	2.91%

Source: Calculated from average household income by income category

Share of Household Income by Income Category



Change



Adjusted Share of Household Tax Burden by Income Category, Adjusted for Share of Household Income, proportional to 1979 (1979-2005)

Year	Lowest Quintile	Second Quintile	Middle Quintile	Fourth Quintile	Percentiles 81-90	Percentiles 91-95	Percentiles 96-99	Percentiles 99.0-99.5	Percentiles 99.5-99.9	Percentiles 99.9-99.99	Top 0.01 Percentile
1979	2.1	7.2	13.2	21.0	15.8	11.0	14.2	3.6	5.4	3.7	2.7
1980	2.0	7.1	13.3	21.3	16.2	11.1	14.5	3.6	5.3	3.2	2.2
1981	2.0	7.2	13.7	21.6	16.4	11.2	14.5	3.5	4.7	2.9	2.1
1982	2.2	7.3	13.9	21.9	16.8	11.2	13.9	3.4	4.3	2.7	1.7
1983	2.4	7.4	13.8	21.8	16.5	10.9	13.5	3.1	4.4	2.8	2.1
1984	2.7	7.7	13.9	21.6	16.2	10.6	13.1	3.2	4.4	2.7	2.1
1985	2.6	7.8	13.9	21.7	16.3	10.7	13.2	3.0	4.2	2.8	1.9
1986	2.5	7.7	14.1	22.0	16.2	10.7	12.9	3.0	4.3	2.2	1.6
1987	2.1	7.4	13.4	21.1	16.0	10.7	13.6	3.4	4.5	2.9	2.1
1988	2.1	7.5	13.5	21.5	15.9	10.5	13.3	3.1	4.2	2.7	1.9
1989	1.9	7.4	13.9	21.5	16.1	10.6	13.3	3.1	4.3	2.6	2.0
1990	2.1	7.5	13.7	21.6	16.2	10.6	13.4	3.1	4.2	2.7	2.0
1991	2.1	7.3	13.6	21.6	16.1	10.7	13.8	3.1	4.5	2.7	2.0
1992	2.0	7.0	13.5	21.2	16.0	10.8	13.7	3.2	4.5	2.7	1.8
1993	1.8	6.8	13.0	20.6	15.5	10.5	14.0	3.4	4.9	3.2	2.1
1994	1.5	6.6	13.1	20.6	15.5	10.6	13.8	3.5	5.0	3.2	2.5
1995	1.5	6.5	12.8	20.5	15.3	10.7	13.8	3.3	4.9	3.2	2.5
1996	1.3	6.4	12.6	20.2	15.4	10.5	14.0	3.5	5.0	3.0	2.2
1997	1.3	6.4	12.6	20.2	15.5	10.6	13.8	3.4	4.8	3.0	1.9
1998	1.3	6.2	12.6	20.3	15.8	10.8	13.8	3.3	4.7	2.8	1.8
1999	1.4	6.3	12.5	20.2	15.5	10.6	14.1	3.4	4.7	2.7	1.6
2000	1.5	6.1	12.3	20.0	15.5	10.6	13.9	3.4	4.6	2.6	1.7
2001	1.3	5.8	11.8	20.2	15.7	11.0	14.1	3.4	4.7	2.9	2.0
2002	1.3	5.8	12.0	20.3	15.7	10.9	14.5	3.5	4.8	3.0	2.2
2003	1.3	5.4	11.8	20.1	15.6	10.7	14.3	3.5	5.0	3.0	2.0
2004	1.2	5.5	11.7	19.6	15.3	10.6	14.2	3.6	4.9	2.9	1.9
2005	1.1	5.3	11.6	19.6	15.0	10.6	14.0	3.5	4.7	2.7	1.9

Source: Calculated based on share of household tax burden and share of household income
 Adjusted tax burden = share of tax burden / (share of income in current year * share of income in 1979)

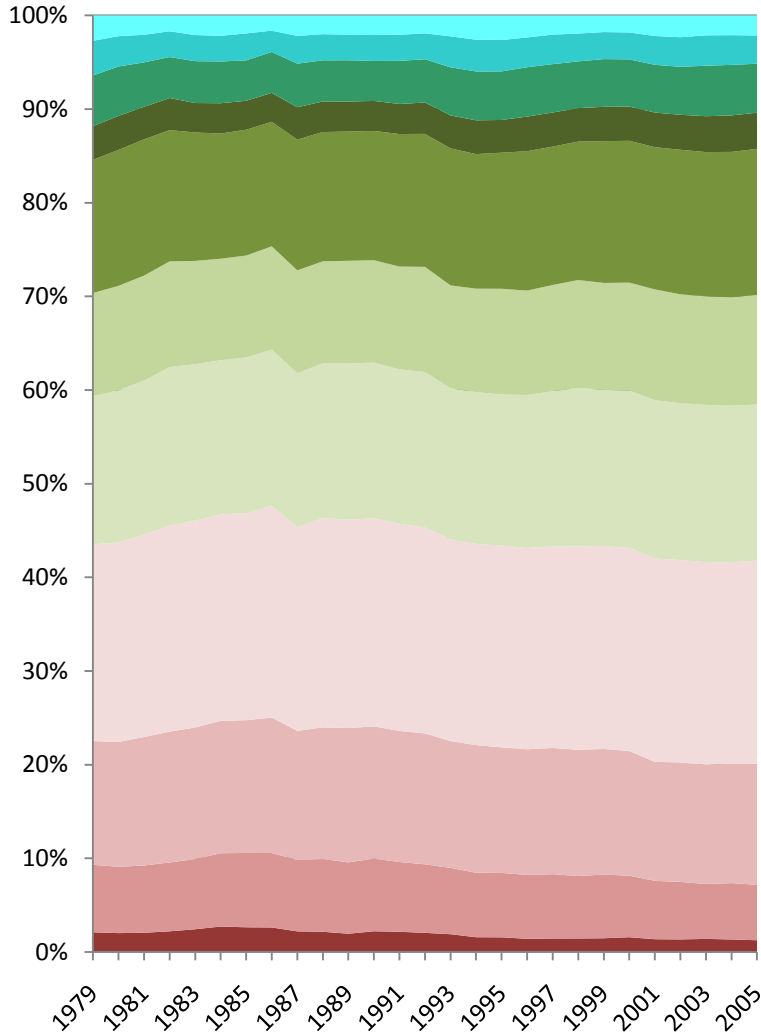
Adjusted Share of Household Tax Burden by Income Category, Adjusted for Share of Household Income, proportional to current year (1979-2005)

1979	2.1	7.2	13.2	21.0	15.8	11.0	14.2	3.6	5.4	3.7	2.7
1980	2.0	7.1	13.3	21.3	16.3	11.1	14.5	3.6	5.3	3.2	2.2
1981	2.1	7.2	13.7	21.6	16.4	11.2	14.6	3.5	4.7	2.9	2.1
1982	2.2	7.3	14.0	22.0	16.9	11.3	14.0	3.4	4.4	2.8	1.7
1983	2.4	7.5	14.0	22.1	16.7	11.0	13.7	3.1	4.5	2.8	2.1
1984	2.7	7.8	14.1	22.0	16.5	10.8	13.4	3.2	4.5	2.7	2.2
1985	2.6	7.9	14.2	22.1	16.6	10.9	13.4	3.1	4.3	2.9	1.9
1986	2.6	8.0	14.5	22.6	16.7	11.0	13.3	3.1	4.4	2.3	1.6
1987	2.2	7.6	13.8	21.8	16.4	11.0	14.0	3.5	4.7	3.0	2.2
1988	2.2	7.8	14.1	22.3	16.5	10.9	13.8	3.3	4.4	2.8	2.0
1989	1.9	7.6	14.3	22.3	16.7	11.0	13.8	3.2	4.4	2.7	2.0
1990	2.2	7.8	14.1	22.2	16.6	10.9	13.8	3.2	4.3	2.8	2.0
1991	2.2	7.5	14.0	22.1	16.5	11.0	14.2	3.2	4.6	2.8	2.1
1992	2.0	7.3	14.0	22.0	16.6	11.2	14.2	3.3	4.6	2.8	1.9
1993	1.9	7.1	13.5	21.5	16.2	11.0	14.6	3.5	5.1	3.3	2.2
1994	1.6	6.9	13.6	21.5	16.2	11.0	14.4	3.6	5.2	3.4	2.6
1995	1.6	6.9	13.4	21.6	16.1	11.3	14.5	3.5	5.2	3.4	2.6
1996	1.4	6.8	13.4	21.5	16.3	11.1	14.9	3.7	5.3	3.2	2.3
1997	1.4	6.9	13.5	21.5	16.5	11.3	14.8	3.6	5.2	3.2	2.0
1998	1.4	6.7	13.5	21.7	16.9	11.5	14.8	3.6	5.0	3.0	1.9
1999	1.5	6.8	13.4	21.7	16.7	11.4	15.1	3.7	5.1	2.9	1.8
2000	1.6	6.6	13.3	21.7	16.8	11.5	15.1	3.7	5.0	2.9	1.8
2001	1.4	6.2	12.7	21.7	16.9	11.8	15.2	3.7	5.1	3.1	2.2
2002	1.3	6.1	12.8	21.6	16.7	11.6	15.4	3.7	5.1	3.2	2.3
2003	1.4	5.9	12.7	21.7	16.8	11.6	15.4	3.8	5.4	3.2	2.1
2004	1.3	6.0	12.8	21.5	16.7	11.6	15.5	3.9	5.4	3.2	2.1
2005	1.3	5.9	12.9	21.7	16.7	11.7	15.6	3.9	5.2	3.0	2.1
Change	-0.8	-1.3	-0.3	0.7	0.8	0.7	1.4	0.3	-0.2	-0.7	-0.6

Source: Calculated based on share of household tax burden and share of household income

Adjusted tax burden = adjusted tax burden proportional to 1979 / sum of adjusted tax burdens for all income categories

Adjusted Share of Household Tax Burden by Income Category



- Top 0.01 Percentile
- Percentiles 99.9-99.99
- Percentiles 99.5-99.9
- Percentiles 99.0-99.5
- Percentiles 96-99
- Percentiles 91-95
- Percentiles 81-90
- Fourth Quintile
- Middle Quintile
- Second Quintile
- Lowest Quintile

Change

