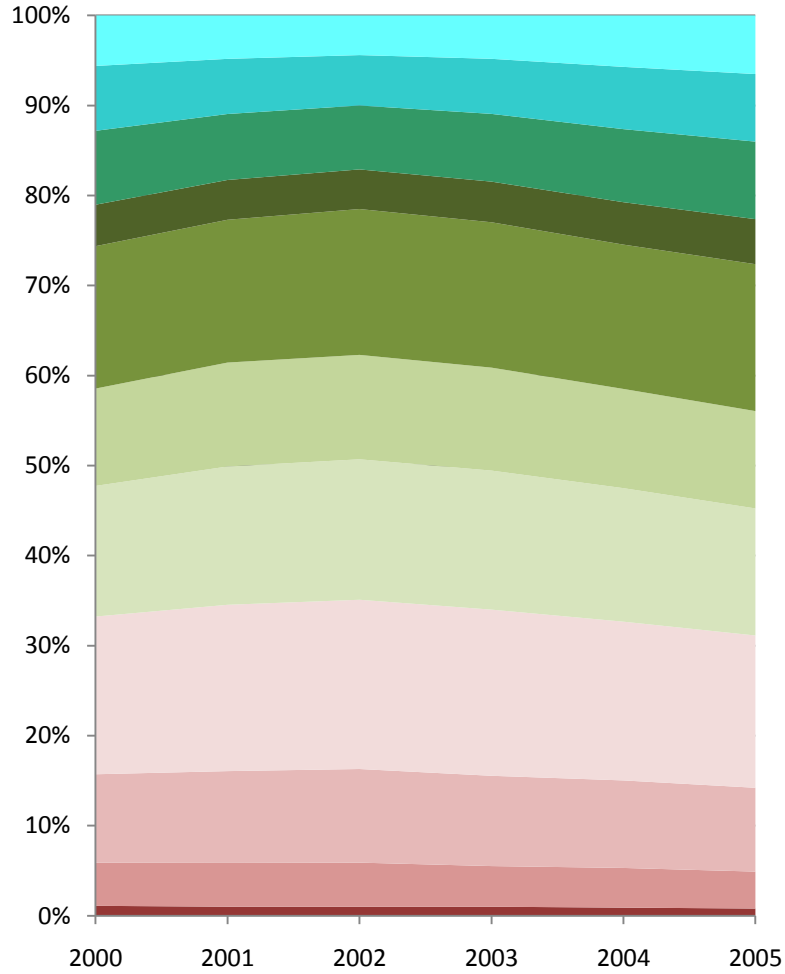


**Share of Household Tax Burden by Income Category (2000-2005)**

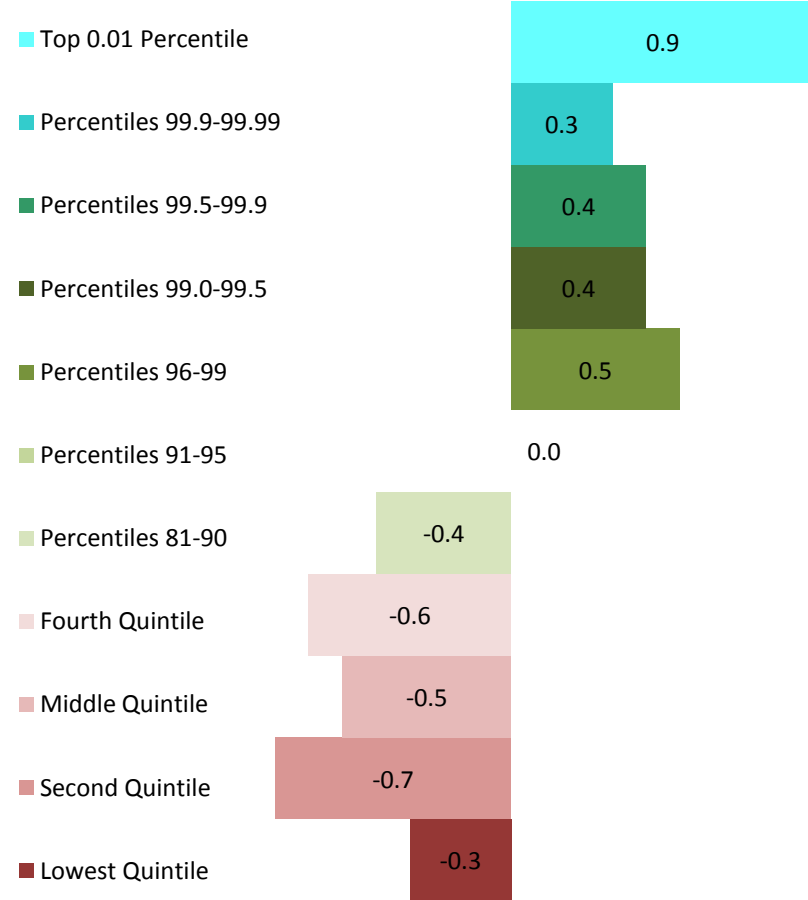
| Year   | Lowest Quintile | Second Quintile | Middle Quintile | Fourth Quintile | Percentiles 81-90 | Percentiles 91-95 | Percentiles 96-99 | Percentiles 99.0-99.5 | Percentiles 99.5-99.9 | Percentiles 99.9-99.99 | Top 0.01 Percentile |
|--------|-----------------|-----------------|-----------------|-----------------|-------------------|-------------------|-------------------|-----------------------|-----------------------|------------------------|---------------------|
| 2000   | 1.1             | 4.8             | 9.8             | 17.5            | 14.5              | 10.8              | 15.8              | 4.6                   | 8.2                   | 7.2                    | 5.6                 |
| 2001   | 1.0             | 4.9             | 10.1            | 18.4            | 15.3              | 11.5              | 15.8              | 4.4                   | 7.3                   | 6.1                    | 4.8                 |
| 2002   | 1.0             | 4.9             | 10.4            | 18.8            | 15.6              | 11.6              | 16.2              | 4.4                   | 7.1                   | 5.6                    | 4.4                 |
| 2003   | 1.0             | 4.5             | 10.0            | 18.4            | 15.4              | 11.4              | 16.1              | 4.5                   | 7.5                   | 6.1                    | 4.8                 |
| 2004   | 0.9             | 4.4             | 9.7             | 17.6            | 14.8              | 11                | 16                | 4.7                   | 8.1                   | 6.9                    | 5.7                 |
| 2005   | 0.8             | 4.1             | 9.3             | 16.9            | 14.1              | 10.8              | 16.3              | 5                     | 8.6                   | 7.5                    | 6.5                 |
| Change | -0.3            | -0.7            | -0.5            | -0.6            | -0.4              | 0.0               | 0.5               | 0.4                   | 0.4                   | 0.3                    | 0.9                 |

Source: [http://www.cbo.gov/ftpdocs/98xx/doc9884/12-23-EffectiveTaxRates\\_Letter.pdf](http://www.cbo.gov/ftpdocs/98xx/doc9884/12-23-EffectiveTaxRates_Letter.pdf)

**Share of Household Tax Burden by  
Income Category**



**Change**



**Average Household Income by Income Category (2000-2005)**

| Year | Lowest Quintile | Second Quintile | Middle Quintile | Fourth Quintile | Percentiles 81-90 | Percentiles 91-95 | Percentiles 96-99 | Percentiles 99.0-99.5 | Percentiles 99.5-99.9 | Percentiles 99.9-99.99 | Top 0.01 Percentile |
|------|-----------------|-----------------|-----------------|-----------------|-------------------|-------------------|-------------------|-----------------------|-----------------------|------------------------|---------------------|
| 2000 | 16,600          | 37,700          | 57,000          | 84,500          | 117,600           | 157,200           | 257,300           | 547,800               | 1,139,800             | 4,522,300              | 34,440,100          |
| 2001 | 16,400          | 38,000          | 57,700          | 83,200          | 115,400           | 152,900           | 240,400           | 484,800               | 940,900               | 3,356,400              | 22,859,200          |
| 2002 | 15,900          | 36,800          | 56,400          | 81,400          | 113,400           | 149,700           | 231,200           | 458,000               | 868,600               | 2,860,400              | 18,850,700          |
| 2003 | 15,700          | 36,500          | 56,100          | 82,000          | 115,000           | 151,900           | 237,500           | 470,700               | 898,100               | 3,130,100              | 23,202,200          |
| 2004 | 15,800          | 37,200          | 58,000          | 84,500          | 118,700           | 157,200           | 250,400           | 517,300               | 1,036,600             | 3,872,200              | 29,743,900          |
| 2005 | 15,900          | 37,400          | 58,500          | 85,200          | 120,600           | 161,800           | 269,800           | 588,100               | 1,207,200             | 4,699,500              | 35,473,200          |

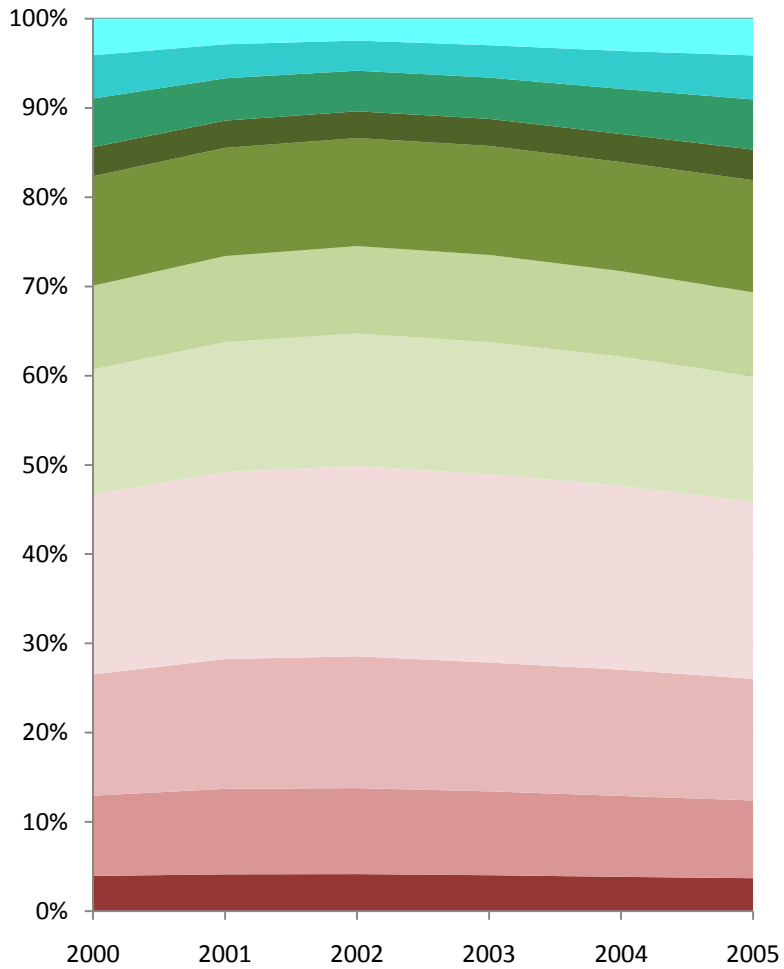
Source: [http://www.cbo.gov/ftpdocs/98xx/doc9884/12-23-EffectiveTaxRates\\_Letter.pdf](http://www.cbo.gov/ftpdocs/98xx/doc9884/12-23-EffectiveTaxRates_Letter.pdf)

**Share of Household Income by Income Category (2000-2005)**

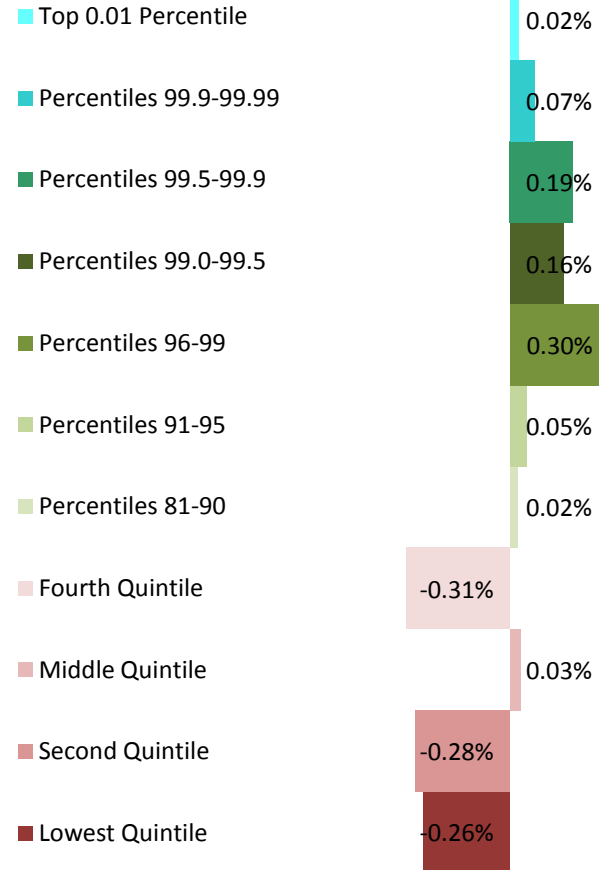
|        |        |        |        |        |        |       |        |       |       |       |       |
|--------|--------|--------|--------|--------|--------|-------|--------|-------|-------|-------|-------|
| 2000   | 3.96%  | 8.99%  | 13.59% | 20.15% | 14.02% | 9.37% | 12.27% | 3.27% | 5.44% | 4.85% | 4.11% |
| 2001   | 4.13%  | 9.58%  | 14.54% | 20.97% | 14.54% | 9.63% | 12.12% | 3.05% | 4.74% | 3.81% | 2.88% |
| 2002   | 4.16%  | 9.63%  | 14.77% | 21.31% | 14.84% | 9.80% | 12.11% | 3.00% | 4.55% | 3.37% | 2.47% |
| 2003   | 4.04%  | 9.39%  | 14.43% | 21.10% | 14.79% | 9.77% | 12.22% | 3.03% | 4.62% | 3.62% | 2.98% |
| 2004   | 3.85%  | 9.07%  | 14.14% | 20.60% | 14.47% | 9.58% | 12.21% | 3.15% | 5.05% | 4.25% | 3.63% |
| 2005   | 3.70%  | 8.71%  | 13.62% | 19.84% | 14.04% | 9.42% | 12.57% | 3.42% | 5.62% | 4.92% | 4.13% |
| Change | -0.26% | -0.28% | 0.03%  | -0.31% | 0.02%  | 0.05% | 0.30%  | 0.16% | 0.19% | 0.07% | 0.02% |

Source: Calculated from average household income by income category

## Share of Household Income by Income Category



## Change



**Adjusted Share of Household Tax Burden by Income Category, Adjusted for Share of Household Income, proportional to 2000 (2000-2005)**

| Year | Lowest Quintile | Second Quintile | Middle Quintile | Fourth Quintile | Percentiles 81-90 | Percentiles 91-95 | Percentiles 96-99 | Percentiles 99.0-99.5 | Percentiles 99.5-99.9 | Percentiles 99.9-99.99 | Top 0.01 Percentile |
|------|-----------------|-----------------|-----------------|-----------------|-------------------|-------------------|-------------------|-----------------------|-----------------------|------------------------|---------------------|
| 2000 | 1.1             | 4.8             | 9.8             | 17.5            | 14.5              | 10.8              | 15.8              | 4.6                   | 8.2                   | 7.2                    | 5.6                 |
| 2001 | 1.0             | 4.6             | 9.4             | 17.7            | 14.7              | 11.2              | 16.0              | 4.7                   | 8.4                   | 7.8                    | 6.8                 |
| 2002 | 1.0             | 4.6             | 9.6             | 17.8            | 14.7              | 11.1              | 16.4              | 4.8                   | 8.5                   | 8.1                    | 7.3                 |
| 2003 | 1.0             | 4.3             | 9.4             | 17.6            | 14.6              | 10.9              | 16.2              | 4.9                   | 8.8                   | 8.2                    | 6.6                 |
| 2004 | 0.9             | 4.4             | 9.3             | 17.2            | 14.3              | 10.8              | 16.1              | 4.9                   | 8.7                   | 7.9                    | 6.5                 |
| 2005 | 0.9             | 4.2             | 9.3             | 17.2            | 14.1              | 10.7              | 15.9              | 4.8                   | 8.3                   | 7.4                    | 6.5                 |

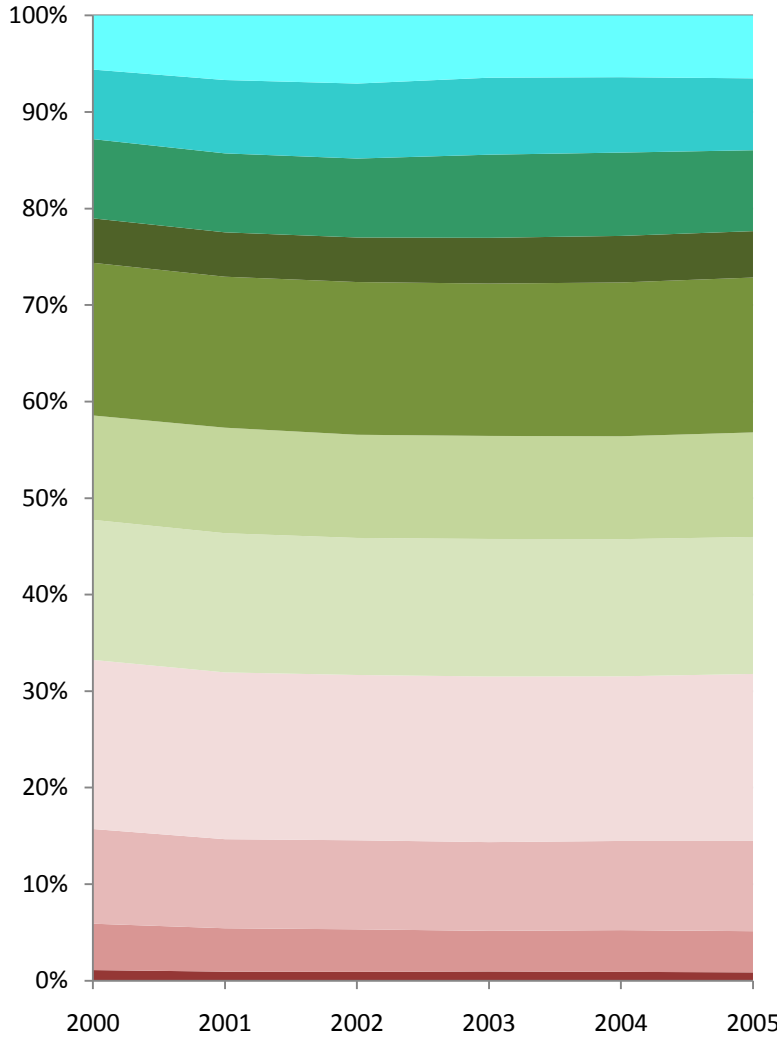
Source: Calculated based on share of household tax burden and share of household income  
 Adjusted tax burden = share of tax burden / (share of income in current year \* share of income in 2000)

**Adjusted Share of Household Tax Burden by Income Category, Adjusted for Share of Household Income, proportional to current year (2000-2005)**

|        |      |      |      |      |      |      |      |     |     |     |     |
|--------|------|------|------|------|------|------|------|-----|-----|-----|-----|
| 2000   | 1.1  | 4.8  | 9.8  | 17.5 | 14.5 | 10.8 | 15.8 | 4.6 | 8.2 | 7.2 | 5.6 |
| 2001   | 0.9  | 4.5  | 9.2  | 17.3 | 14.4 | 10.9 | 15.6 | 4.6 | 8.2 | 7.6 | 6.7 |
| 2002   | 0.9  | 4.4  | 9.2  | 17.1 | 14.2 | 10.7 | 15.8 | 4.6 | 8.2 | 7.8 | 7.1 |
| 2003   | 1.0  | 4.2  | 9.2  | 17.2 | 14.3 | 10.7 | 15.8 | 4.7 | 8.6 | 8.0 | 6.4 |
| 2004   | 0.9  | 4.3  | 9.2  | 17.1 | 14.2 | 10.7 | 15.9 | 4.8 | 8.6 | 7.8 | 6.4 |
| 2005   | 0.9  | 4.3  | 9.4  | 17.3 | 14.2 | 10.8 | 16.0 | 4.8 | 8.4 | 7.4 | 6.5 |
| Change | -0.2 | -0.5 | -0.5 | -0.2 | -0.3 | 0.0  | 0.2  | 0.2 | 0.2 | 0.2 | 0.9 |

Source: Calculated based on share of household tax burden and share of household income  
 Adjusted tax burden = adjusted tax burden proportional to 2000 / sum of adjusted tax burdens for all income categories

## Adjusted Share of Household Tax Burden by Income Category



## Change

